



ENAM

---

# India Inc Shareholding – Jun08

---

## BSE-500: What's changed?

**Pankaj Kadu**  
Database Manager  
Pankaj.kadu@enam.com  
(+91 22 6754 7630)

**Zameer Khan**  
Database Manager  
zameer@enam.com  
(+91 22 6754 7649)

---

August 19, 2008

# Summary

## ⇒ FIIs sold \$4bn during qtr ended June 08

- **Sector: SOLD:** Banking & Fin Services, Engg, Real Estate **BOUGHT:** IT Services
- **U/w:** Oil & Gas, IT & FMCG; **O/w:** Banking & Fin Services, Pharma, & Realty
- **Stocks: BOUGHT:** Cairn, Wipro, HDFC Bank, Idea Cellular, Reliance Power, JSW Steel, NDTV, TCS, ABNL and Mundra Port. **SOLD:** RIL, Bharti Airtel, L&T, BHEL, NTPC, ONGC, ICICI bank, HDFC, DLF and Reliance capital

## ⇒ MFs (incl UTI) sold \$231mn

- **Sectors: SOLD:** Oil & Gas, Metals, Banking & Fin Services **BOUGHT:** IT Services, Telecom and Engg.
- **O/w:** Engg, Pharma, & FMCG. **U/w:** IT Services, Oil & Gas and Banking & Fin Services
- **Stocks: BOUGHT:** Bharti Airtel, Infosys, BHEL, TCS, HDFC, Reliance Petroleum, RIL, HLL, Idea Cellular and Punj Lloyd. **SOLD:** Cairn, SBI, NDTV, Grasim, Sterlite Inds, Sesa Goa, JSW Steel, Reliance Comm, ABNL and PNB

## ⇒ Banks, FIs & Insurance cos (BFI) bought \$2.6bn

- **Sectors: BOUGHT:** Banking & Fin Services, Engg, Energy and Oil & Gas **SOLD:** IT Services.
- **O/w:** Metals, Auto, & FMCG. **U/w:** IT Services, Banking & Oil & Gas
- **Stocks: BOUGHT:** NTPC, L&T, SAIL, SBI, Grasim, Bharti Airtel, HDFC, Reliance Inds, ITC and GAIL. **SOLD:** Wipro, Ranbaxy, Infosys, Reliance Petro, Ispat Inds, Thomas Cook, Tata Chem, Pfizer, Essar Oil and Tata Power.

*Note: The Top 10 BUYS & SELLS listed above are based on change in value. All relative weights wrt Sensex, O/w=Overweight, U/w=Underweight  
Source: ENAM Research, BSE, CMIE*

# Summary .....

# Contd.

## BSE-500 sector-wise

Sectors	FIIs		MFs (incl UTI)		BFI	
	B / S	Ow/ U/w	B / S	Ow/ U/w	B / S	Ow/ U/w
Auto	S	U/w	S	O/w	B	O/w
Banks & Financial services	S	O/w	S	U/w	B	U/w
Cement	S	U/w	S	O/w	B	O/w
Chemicals & Fertilisers	B		B		S	
Diversified	B		S		S	
Energy	S	U/w	B	U/w	B	O/w
Engineering	S	U/w	B	O/w	B	O/w
FMCG	S	U/w	B	O/w	B	O/w
IT - Services	B	U/w	B	U/w	S	U/w
Infrastructure	S		B		B	
Media	S		S		B	
Metals / Mining	S	U/w	S	O/w	B	O/w
Oil & Gas	S	U/w	S	U/w	B	U/w
Pharmaceuticals	B	O/w	B	O/w	B	O/w
Real Estate	S	O/w	S	U/w	S	U/w
Retail	S		B		B	
Telecommunications	S	U/w	B	U/w	B	U/w
Textiles	B		B		S	
Transportation	B		S		S	
Miscellaneous	S		S		S	

## BSE-30 company-wise

Company	FIIs		MFs (incl UTI)		BFI	
	B / S	Ow/ U/w	B / S	Ow/ U/w	B / S	Ow/ U/w
A C C Ltd.	S	U/w	B	U/w	B	O/w
Bharat Heavy Electricals Ltd.	S	U/w	B	O/w	B	U/w
Bharti Airtel Ltd.	S	O/w	B	U/w	B	U/w
D L F Ltd.	S	U/w	S	U/w	S	U/w
Grasim Industries Ltd.	S	U/w	S	U/w	B	U/w
H D F C Bank Ltd.	B	U/w	S	U/w	B	U/w
Hindalco Industries Ltd.	S	U/w	B	U/w	B	U/w
Hindustan Unilever Ltd.	S	U/w	B	U/w	S	U/w
Housing Development Finance	S	O/w	B	U/w	B	U/w
I C I C I Bank Ltd.	S	U/w	S	U/w	B	U/w
I T C Ltd.	S	U/w	B	O/w	B	O/w
Infosys Technologies Ltd.	B	U/w	B	U/w	S	U/w
Jaiprakash Associates Ltd.	S	U/w	S	O/w	B	U/w
Larsen & Toubro Ltd.	S	U/w	B	O/w	B	O/w
Mahindra & Mahindra Ltd.	S	U/w	S	U/w	B	O/w
Maruti Suzuki India Ltd.	S	U/w	S	U/w	B	O/w
N T P C Ltd.	S	U/w	B	U/w	B	U/w
Oil & Natural Gas Corpn. Ltd.	S	U/w	B	U/w	B	U/w
Ranbaxy Laboratories Ltd.	S	U/w	B	U/w	S	U/w
Reliance Communications Ltd.	B	U/w	S	U/w	B	U/w
Reliance Industries Ltd.	S	U/w	B	U/w	B	U/w
Reliance Infrastructure Ltd.	S	U/w	B	U/w	B	O/w
Satyam Computer Services Ltd	S	U/w	B	U/w	B	U/w
State Bank Of India	S	U/w	S	U/w	B	U/w
Sterlite Industries (India) Ltd.	B	U/w	S	U/w	S	U/w
Tata Consultancy Services Ltd.	B	U/w	B	U/w	B	U/w
Tata Motors Ltd.	S	U/w	S	U/w	B	O/w
Tata Power Co. Ltd.	B	U/w	B	U/w	S	O/w
Tata Steel Ltd.	B	U/w	S	U/w	B	U/w
Wipro Ltd.	B	U/w	B	U/w	S	U/w

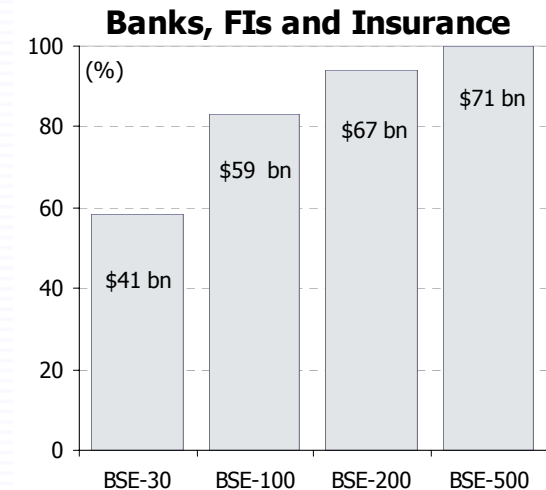
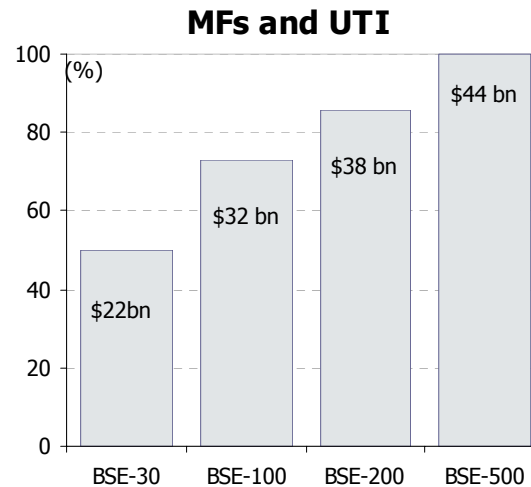
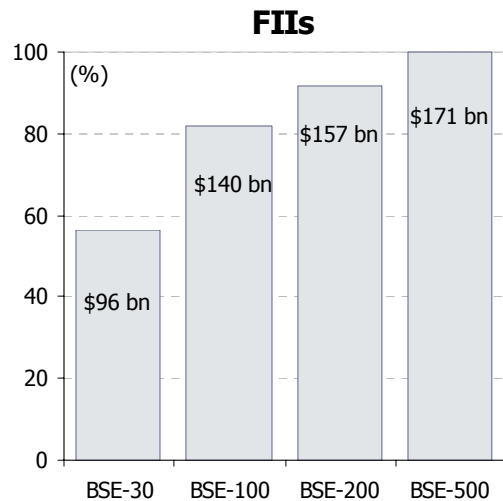
Note: Overweight/ underweight wrt Sensex for both sector-wise and company-wise. B=Bought, S=Sold, O/w=Overweight, U/w=Underweight

# Table of contents

	<b>Slide No.</b>
➤ Concentration analysis	5
➤ Holding pattern: summary of various indices	6
➤ Sector-wise: Portfolio holding, Net investment, Over/Underweight	7-9
➤ Top-10 holding: Sector-wise & Company-wise	10-11
➤ Holding pattern: June 04 – June 08	12
➤ FIIs: Holding change – Cos and Sectors	13-14
➤ MFs & UTI: Holding change – Cos and Sectors	15-16
➤ Banks, FIs & Insurance: Holding change – Cos and Sectors	17-18
➤ BSE100 holding for qtr ended June 2008	19-22

# Concentration analysis

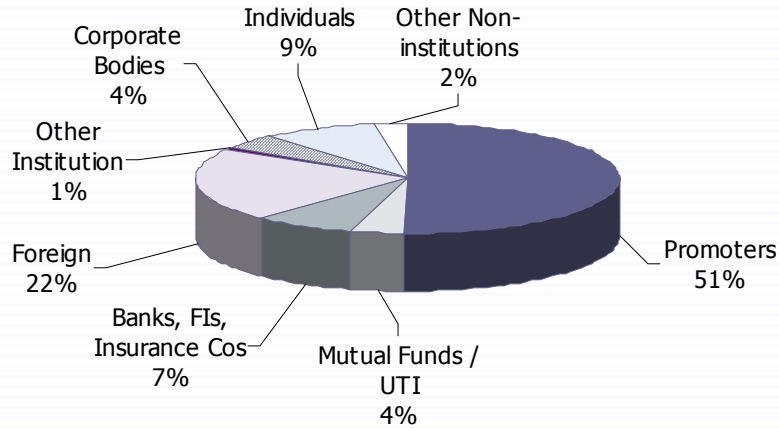
- BSE-100 stocks account for 80%+ of BFI and FII holding and 73% of MFs holding
- Top 50 stocks: MFs & BFI were buyers to the tune of \$96 mn & \$2.5bn in these, whereas FIIs sold \$2.7bn worth of shares



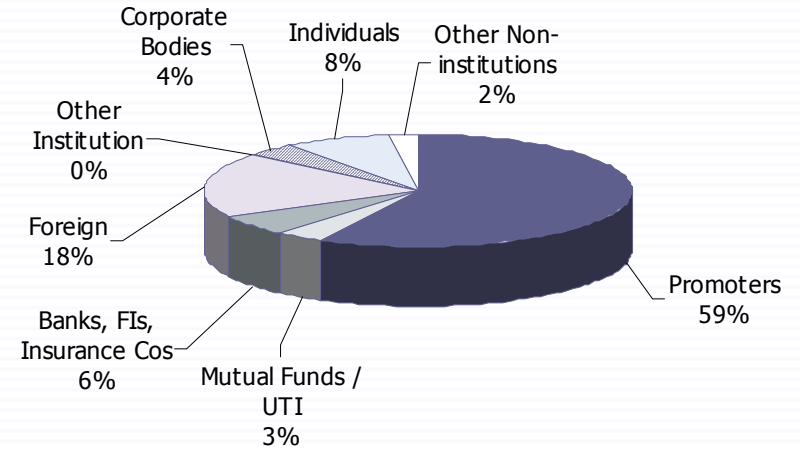
	Portfolio hldg June-08 (%)			Hldg value June-08 (USDm)			Net inv (USDm)		
	MFs	Banks	FII	MFs	Banks	FII	MFs	Banks	FII
50-stocks	64.9	78.5	71.3	28,663	55,821	121,864	96	2,549	(2,795)
100-stocks	14.4	12.6	13.0	6,342	8,960	22,265	(53)	509	(538)
150-stocks	7.7	4.6	6.4	3,398	3,263	10,907	155	83	(457)
200-stocks	5.0	2.1	3.8	2,205	1,523	6,555	5	30	(144)
250-stocks	3.4	1.1	2.3	1,488	808	3,961	(114)	2	1
300-stocks	2.1	0.6	1.4	931	434	2,389	(165)	(335)	(195)
350-stocks	1.4	0.3	0.8	622	207	1,443	(38)	(9)	(47)
400-stocks	0.8	0.1	0.5	353	60	917	(63)	(45)	(78)
450-stocks	0.3	0.0	0.3	140	8	458	(33)	(2)	(48)
500-stocks	0.0	0.0	0.1	11	0	96	(34)	(0)	(70)

# Holding pattern: Quarter ended June-2008

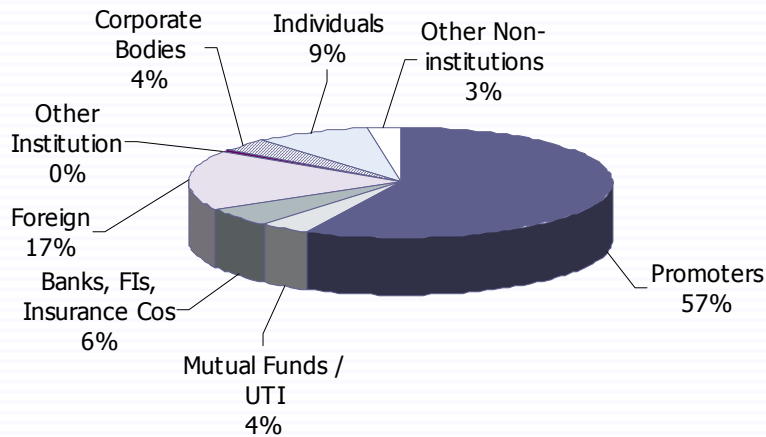
### BSE 30



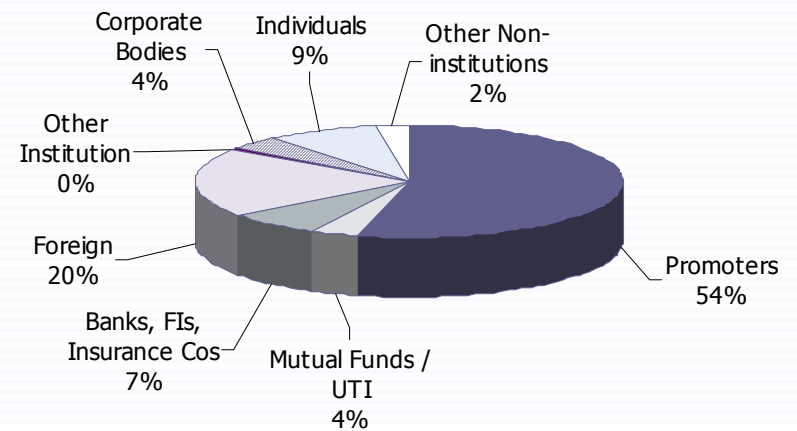
### BSE 100



### BSE 500



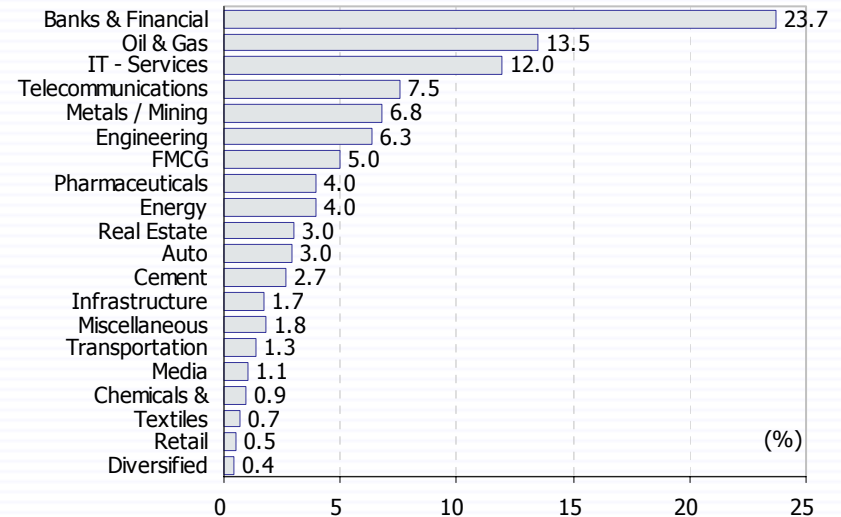
### CNX Midcap



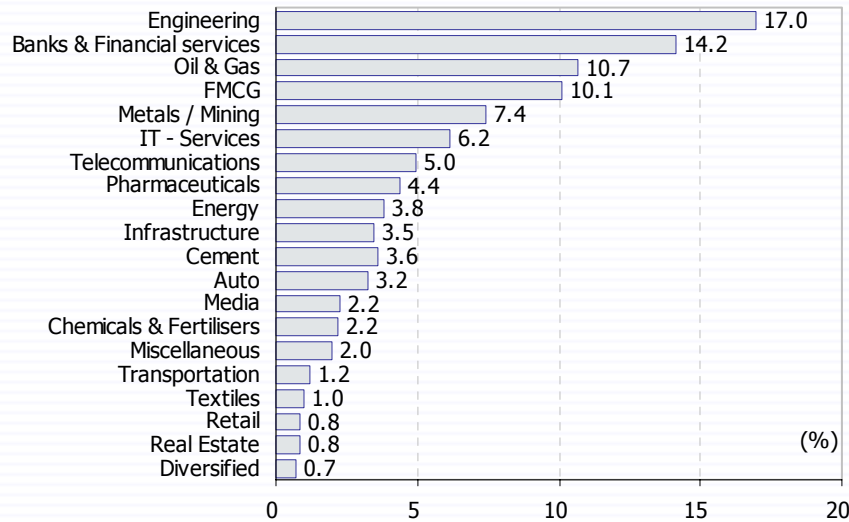
# Sector-wise: Portfolio holding

- FII portfolio was skewed towards Banks & Fin Services, Oil & Gas & IT services ( ~50% of their portfolio)
- MFs (incl UTI) favoured Engg, Banking& Fin Services and Oil & gas ( ~40% of the portfolio)
- Banks, FIs & Insurance cos leaned on Oil & gas, Banking & Fin Services and Metals ( ~43% of their portfolio)

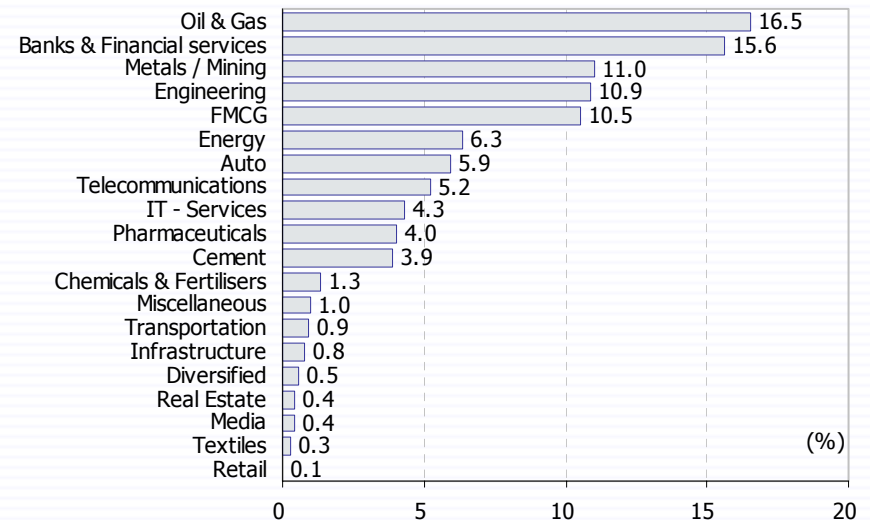
**FIIs**



**MFs and UTI**

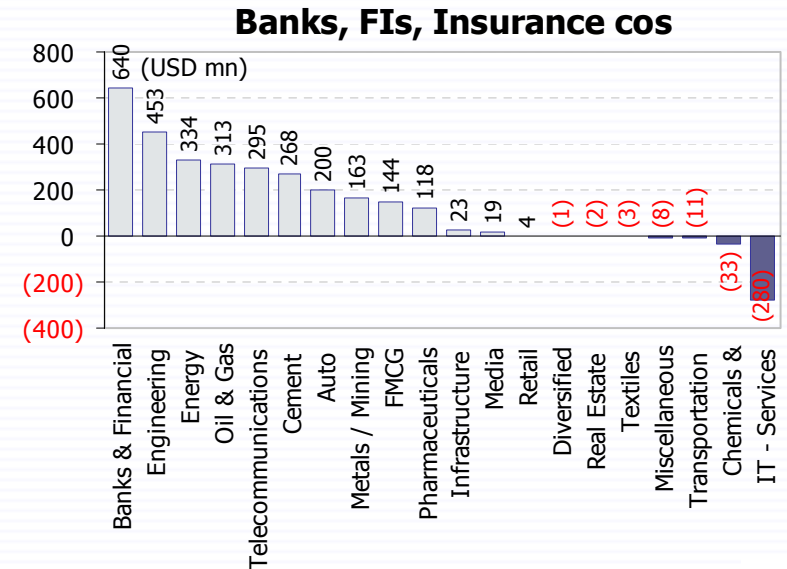
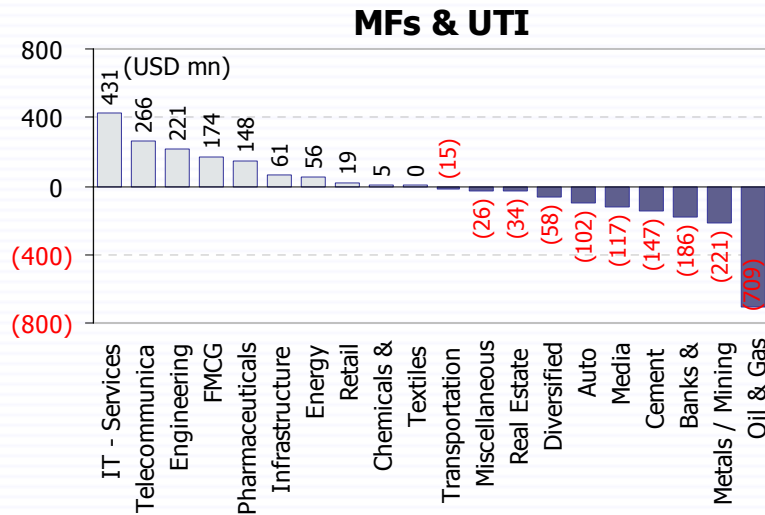
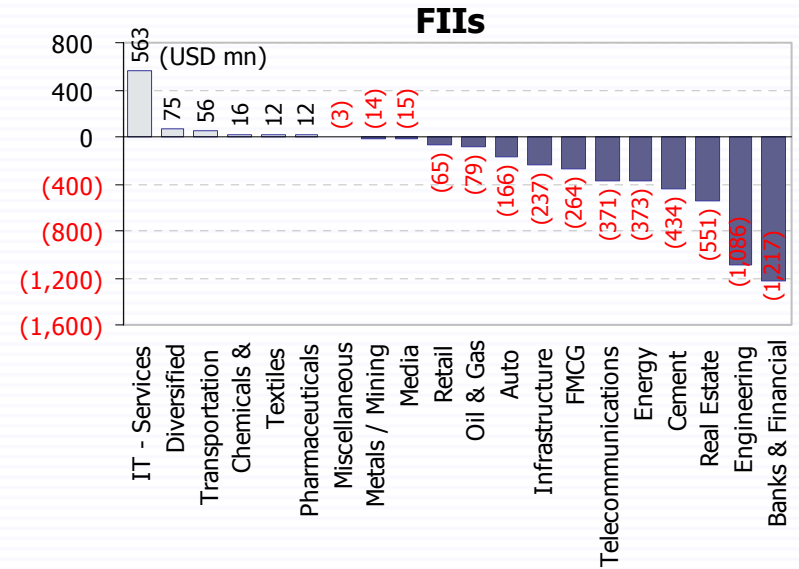


**Banks, FI, Insurance**



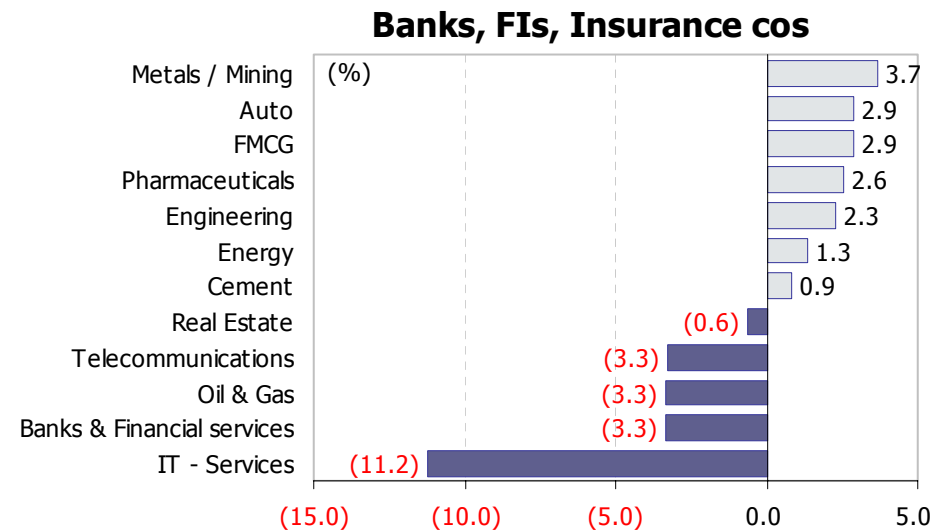
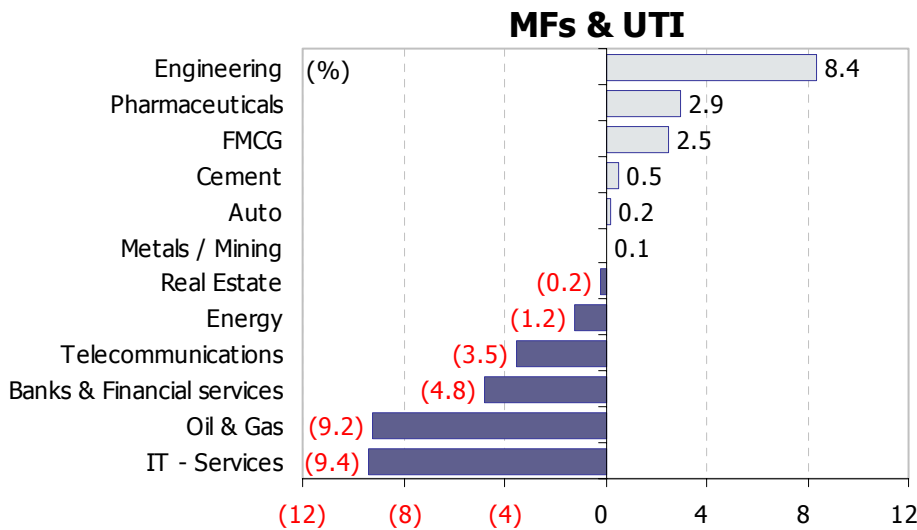
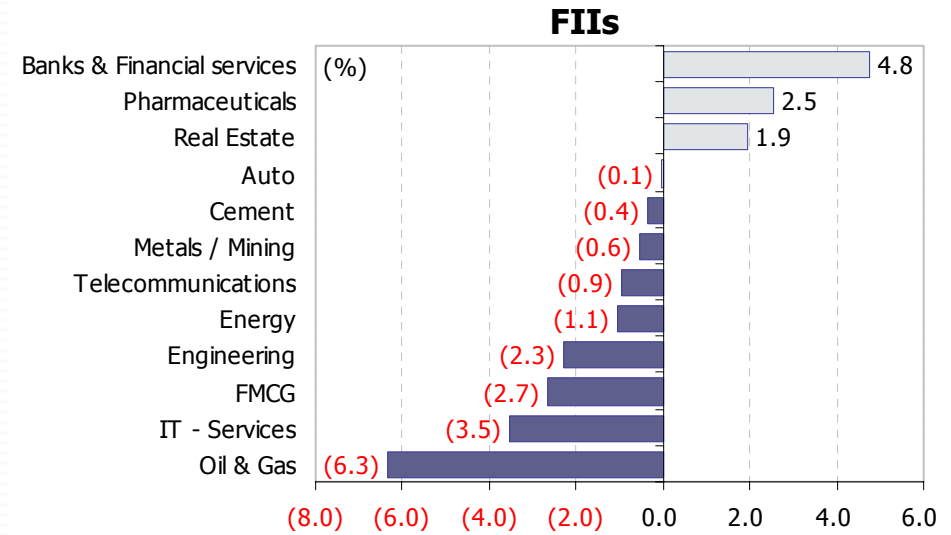
# Net Investment: Quarter ended June-2008

- FIIs sold to the tune of \$4bn.
  - **Sold Banks & Fin Services, Engg, & Realty**
- MFs (incl UTI) sold \$231mn
  - **Bought IT Services, Telcom & Engg**
  - **Sold Oil & gas, metals & mining & banks**
- Banks, FIs & Insurance cos bought to the tune of \$2.6bn
  - **Bought Banks& Fin Services, Engg & Energy**



# Sector: Overweight/Underweight rel to BSE30

- **FIIIs:** U/w: Oil & Gas, IT Services & FMCG O/w: Banking & Fin Services, Pharma, & Realty
- **MFs:** O/w: Engg, Pharma, & FMCG U/w: IT Services, Oil & Gas and Banking & Fin Services
- **Banks, FIs & Insurance cos:** O/w: Metals, Auto, & FMCG U/w: on IT, Banking & Fin Services and Oil & Gas



# Sector-wise: Top-10 holding

- ➔ **Banks & Fin Services, Engg, Oil & Gas, Metals & Mining** remained the most preferred sectors and comprised >40% of the portfolios

Company Name	Portfolio weight (%)	Holding (%)		Hldg chg (%)		Net inv (USDm)		OW/ UW	
	Jun-08	Jun-08	Jun-07	Q-o-Q	Y-o-Y	Q-o-Q	Y-o-Y	BSE-30 (%)	BSE-500 (%)
<b>Mutual funds and UTI</b>									
Engineering	17.0	8.6	9.6	0.2	(0.9)	221	496	8.4	8.9
Banks & Financial services	14.2	3.6	3.8	(0.2)	(0.2)	(186)	(405)	(4.8)	(3.0)
Oil & Gas	10.7	1.2	1.4	(1.1)	(0.2)	(709)	966	(9.2)	(5.5)
FMCG	10.1	7.9	7.3	0.3	0.6	174	359	2.5	3.2
Metals / Mining	7.4	2.6	2.0	(0.7)	0.6	(221)	680	0.1	(0.7)
IT - Services	6.2	2.5	3.1	0.1	(0.6)	431	(206)	(9.4)	(4.8)
Telecommunications	5.0	2.2	2.2	0.5	(0.1)	266	119	(3.5)	(0.9)
Pharmaceuticals	4.4	3.4	4.0	(0.1)	(0.6)	148	123	2.9	(0.6)
Energy	3.8	1.2	1.0	(0.0)	0.2	56	180	(1.2)	(0.9)
Infrastructure	3.5	6.1	8.4	0.1	(2.4)	61	315		2.1
<b>Banks, FIs and Insurance cos</b>									
Oil & Gas	16.5	3.5	5.5	(1.3)	(2.0)	313	484	(3.3)	0.3
Banks & Financial services	15.6	8.6	7.6	0.3	1.0	640	1819	(3.3)	(1.6)
Metals / Mining	11.0	6.2	9.7	(1.5)	(3.4)	163	272	3.7	2.9
Engineering	10.9	5.7	6.5	0.4	(0.8)	453	555	2.3	2.8
FMCG	10.5	12.5	13.1	(0.1)	(0.6)	144	35	2.9	3.6
Energy	6.3	3.0	3.4	0.4	(0.5)	334	(358)	1.3	1.7
Auto	5.9	10.7	11.1	0.1	(0.4)	200	501	2.9	2.4
Telecommunications	5.2	4.6	3.7	0.5	0.9	295	1005	(3.3)	(0.6)
IT - Services	4.3	3.0	2.8	(0.3)	0.2	(280)	437	(11.2)	(6.7)
Pharmaceuticals	4.0	6.3	6.0	0.3	0.4	15	360	2.6	(1.0)
<b>FIIIs</b>									
Banks & Financial services	23.7	17.9	20.3	(1.1)	(2.4)	(1217)	(3619)	4.8	6.5
Oil & Gas	13.5	5.5	7.6	(0.4)	(2.1)	(79)	(3697)	(6.3)	(2.6)
IT - Services	12.0	18.5	17.8	1.1	0.8	563	1895	(3.5)	1.0
Telecommunications	7.5	10.0	11.8	0.0	(1.8)	(371)	(1014)	(0.9)	1.7
Metals / Mining	6.8	6.5	7.5	(2.4)	(1.0)	(14)	563	(0.6)	(1.4)
Engineering	6.3	14.0	15.5	(0.9)	(1.5)	(1086)	(1977)	(2.3)	(1.7)
FMCG	5.0	14.6	12.9	(0.3)	1.7	(264)	312	(2.7)	(1.9)
Pharmaceuticals	4.0	13.3	13.7	(0.4)	(0.4)	12	437	2.5	(1.0)
Energy	4.0	5.5	6.6	(0.5)	(1.1)	(373)	(1491)	(1.1)	(0.7)
Real Estate	3.0	10.3	9.5	(0.9)	0.8	(551)	(78)	1.9	1.1

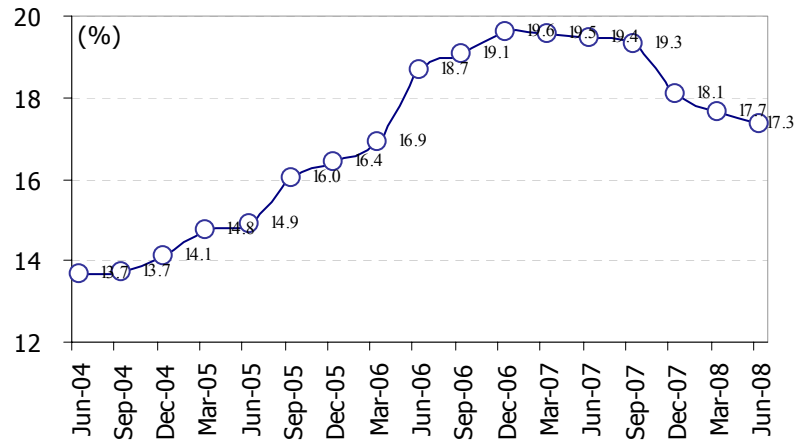
# Company-wise: Top -10 holding

➔ Almost all stocks, barring two (IDFC, & HZL), are part of the BSE-30 index

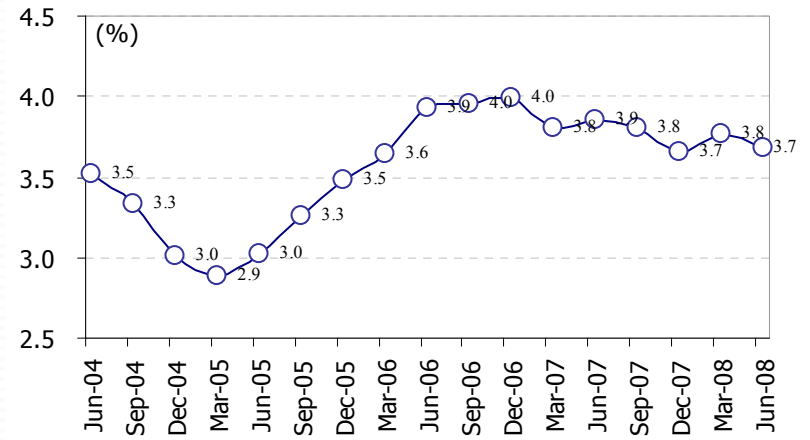
Company Name	Portfolio weight (%)	Holding (%)		Hldg chg (%)		Net inv (USDm)		OW/ UW	
	Jun-08	Jun-08	Jun-07	Q-o-Q	Y-o-Y	Q-o-Q	Y-o-Y	BSE-30 (%)	BSE-500 (%)
<b>Mutual funds and UTI</b>									
Larsen & Toubro Ltd.	7.0	15.9	15.8	0.1	0.1	11	26	0.9	3.7
I T C Ltd.	6.4	14.9	14.6	0.0	0.2	1	40	1.2	3.5
Reliance Industries Ltd.	5.5	2.8	2.4	0.1	0.4	91	361	(10.7)	(3.4)
Bharat Heavy Electricals Ltd.	3.0	6.7	5.1	1.1	1.6	212	303	0.5	1.6
I C I C I Bank Ltd.	3.0	6.0	5.0	(0.1)	1.0	(18)	209	(4.3)	(1.0)
Bharti Airtel Ltd.	2.5	2.9	2.5	0.8	0.4	269	141	(2.6)	(0.3)
Infosys Technologies Ltd.	2.1	3.9	3.8	1.0	0.1	225	31	(6.8)	(2.8)
State Bank Of India	2.0	3.7	6.1	(0.7)	(2.4)	(155)	(535)	(1.4)	0.1
Oil & Natural Gas Corpn. Ltd.	1.8	1.6	1.1	0.0	0.5	1	234	(1.9)	(0.2)
Reliance Communications Ltd.	1.7	2.8	2.9	(0.3)	(0.0)	(69)	(6)	(1.7)	(0.1)
<b>Banks, FIs and Insurance cos</b>									
Reliance Industries Ltd.	7.5	6.3	5.5	0.1	0.7	109	583	(8.7)	(1.3)
I T C Ltd.	6.3	23.4	23.0	0.6	0.4	109	74	1.0	3.4
Larsen & Toubro Ltd.	6.2	22.7	22.4	0.9	0.3	166	51	0.1	2.9
I C I C I Bank Ltd.	3.5	11.5	11.6	0.5	(0.1)	105	(12)	(3.8)	(0.5)
Tata Steel Ltd.	3.4	17.1	15.6	0.3	1.4	43	187	(0.6)	1.2
Oil & Natural Gas Corpn. Ltd.	2.8	4.0	3.5	0.2	0.5	106	248	(0.9)	0.7
Hindustan Zinc Ltd.	2.6	30.1	30.0	0.0	0.0	1	1		2.5
State Bank Of India	2.6	7.8	5.8	0.6	2.0	143	451	(0.8)	0.7
Reliance Communications Ltd.	2.3	6.1	4.5	0.2	1.6	52	415	(1.1)	0.4
Infrastructure Development Finance Co. Ltd.	2.2	33.8	35.2	1.2	(1.4)	51	(63)		1.6
<b>FIIIs</b>									
Reliance Industries Ltd.	8.5	17.1	20.1	(0.7)	(3.0)	(576)	(2434)	(7.6)	(0.3)
Housing Development Finance Corpn. Ltd.	5.8	59.1	68.3	(1.5)	(9.2)	(245)	(1469)	0.8	3.1
Bharti Airtel Ltd.	5.2	23.6	24.9	(1.4)	(1.2)	(486)	(445)	0.1	2.4
I C I C I Bank Ltd.	5.0	38.8	45.8	(1.5)	(7.0)	(301)	(1444)	(2.4)	1.0
Infosys Technologies Ltd.	4.7	33.6	31.8	0.2	1.8	48	401	(4.2)	(0.2)
Satyam Computer Services Ltd.	2.1	47.7	47.9	(0.6)	(0.2)	(40)	(14)	(0.8)	0.5
Oil & Natural Gas Corpn. Ltd.	2.0	6.9	8.7	(0.7)	(1.7)	(324)	(804)	(1.7)	(0.1)
H D F C Bank Ltd.	1.9	28.0	26.5	2.1	1.5	235	164	(1.3)	0.2
Bharat Heavy Electricals Ltd.	1.8	16.0	19.5	(2.1)	(3.5)	(389)	(652)	(0.7)	0.5
State Bank Of India	1.7	12.7	11.9	(0.2)	0.8	(34)	170	(1.6)	(0.1)

# Holding pattern: June 04 – June 08

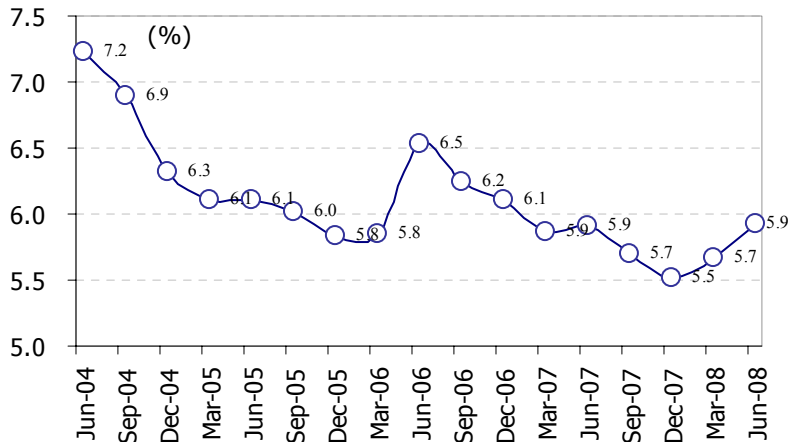
**FII and..**



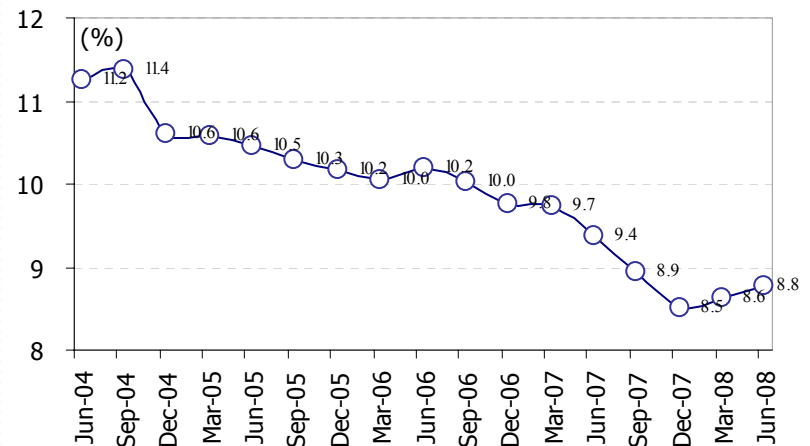
**...MFs (incl UTI) have been selling**



**But Banks, FIs & Insurance...**



**..Along with Public have taken up the slack**



# FII: Holding change - Cos

- FIIs favoured **NDTV, Everonn, Cairn & Provogue** during the quarter
- Sold **DCB, Rajesh exports, GSS & Indiabulls**

## Top-25

Company Name	Hldg chg	Holding	Net Inv
	Q-o-Q (%)	(%)	(USDm)
	Jun-08	Jun-08	Jun-08
New Delhi Television Ltd.	14.0	15.9	82
Everonn Systems India Ltd.	9.1	10.9	19
Cairn India Ltd.	7.0	10.5	801
Provogue (India) Ltd.	6.8	30.9	38
Bharat Bijlee Ltd.	5.4	8.5	14
Radico Khaitan Ltd.	5.1	14.7	13
Chambal Fertilisers & Chemicals Ltd.	4.8	9.8	33
Monnet Ispat & Energy Ltd.	4.5	37.7	31
McNally Bharat Engg. Co. Ltd.	4.4	20.3	5
Simplex Infrastructures Ltd.	4.2	16.3	26
Lupin Ltd.	4.2	12.4	47
Aptech Ltd.	3.9	29.5	9
Jain Irrigation Systems Ltd.	3.6	43.2	36
Idea Cellular Ltd.	3.6	11.3	224
Bharati Shipyard Ltd.	3.2	14.2	10
Maharashtra Seamless Ltd.	3.1	13.2	15
Karuturi Global Ltd.	3.1	34.5	6
Hindustan Oil Exploration Co. Ltd.	3.0	9.4	12
J S W Steel Ltd.	2.9	29.3	118
Dishman Pharmaceuticals & Chemicals Ltd	2.9	11.8	16
Mphasis Ltd.	2.8	16.6	30
Cals Refineries Ltd.	2.6	2.7	24
Vakrangee Softwares Ltd.	2.6	38.3	3
Aditya Birla Nuvo Ltd.	2.5	20.4	77
Dredging Corpn. Of India Ltd.	2.3	6.6	9

## Bottom-25

Company Name	Hldg chg	Holding	Net Inv
	Q-o-Q (%)	(%)	(USDm)
	Jun-08	Jun-08	Jun-08
Development Credit Bank Ltd.	(12.4)	17.7	(41)
Rajesh Exports Ltd.	(8.5)	8.5	(41)
G S S America Infotech Ltd.	(8.3)	1.7	(9)
Indiabulls Securities Ltd.	(7.9)	26.7	(47)
Era Infra Engg. Ltd.	(7.0)	8.8	(22)
Orchid Chemicals & Pharmaceuticals Ltd.	(6.4)	9.4	(23)
U T V Software Communications Ltd.	(6.3)	14.0	(34)
A C C Ltd.	(6.0)	9.1	(181)
G T L Ltd.	(5.7)	16.4	(30)
Torrent Pharmaceuticals Ltd.	(5.5)	6.9	(17)
P T C India Ltd.	(5.0)	30.7	(23)
Indiabulls Real Estate Ltd.	(4.9)	41.7	(130)
Strides Arcolab Ltd.	(4.9)	16.0	(8)
Sasken Communication Technologies Ltd.	(4.8)	1.5	(5)
Bartronics India Ltd.	(4.8)	6.2	(6)
I O L Netcom Ltd.	(4.6)	18.1	(3)
Golden Tobacco Ltd.	(4.6)	6.7	(4)
Britannia Industries Ltd.	(4.2)	7.5	(31)
Vijaya Bank	(4.1)	0.5	(19)
B O C India Ltd.	(4.0)	0.0	(13)
Wire & Wireless (India) Ltd.	(3.8)	16.0	(7)
Alok Industries Ltd.	(3.8)	26.1	(10)
Subex Ltd.	(3.6)	27.5	(4)
Punj Lloyd Ltd.	(3.6)	17.6	(77)
Assam Co. Ltd.	(3.5)	29.5	(7)

# FII: Holding change - Sectors

- ➔ **Banking & Fin Services, Infra, Retail, Cement & Engg** witnessed a decline in holding during the quarter

	Holding (%)								Holding change Q-o-Q (bps)							
	Sep-06	Dec-06	Mar-07	Jun-07	Sep-07	Dec-07	Mar-08	Jun-08	Sep-06	Dec-06	Mar-07	Jun-07	Sep-07	Dec-07	Mar-08	Jun-08
Auto	9.8	9.8	9.8	9.8	9.4	9.4	9.8	9.8	(37)	3	3	(5)	(37)	(1)	37	4
Banks & Financial services	36.9	37.6	37.5	36.3	36.1	35.3	34.0	33.4	163	64	(11)	(121)	(13)	(82)	(129)	(68)
Cement	22.1	22.9	22.4	21.6	22.5	22.2	21.2	19.6	82	86	(57)	(76)	85	(31)	(100)	(157)
Chemicals & Fertilisers	7.2	7.8	8.3	8.7	9.0	10.5	9.6	10.3	(51)	56	57	33	39	150	(92)	68
Diversified	13.1	14.6	15.6	17.3	16.8	17.8	18.1	19.6	(78)	142	107	163	(42)	92	33	151
Energy	8.7	8.6	8.8	9.2	9.7	8.6	7.6	7.2	64	(10)	24	31	51	(106)	(98)	(44)
Engineering	16.6	16.6	15.6	15.9	16.5	17.0	15.7	14.5	42	3	(107)	30	64	50	(133)	(122)
FMCG	14.3	14.1	14.3	14.4	15.0	15.8	15.6	14.9	(18)	(19)	20	14	57	76	(16)	(71)
IT - Services	24.6	26.0	24.2	24.4	25.5	26.4	26.6	28.0	47	134	(176)	24	108	92	21	134
Infrastructure	20.9	21.8	21.8	21.1	20.6	21.5	18.2	16.5	(449)	92	5	(70)	(53)	94	(333)	(174)
Media	18.2	18.0	15.9	15.3	14.7	14.7	13.9	13.9	261	(22)	(212)	(54)	(63)	(1)	(78)	(3)
Metals / Mining	9.4	9.5	9.5	12.9	12.5	11.2	10.8	10.9	(28)	4	3	341	(40)	(134)	(34)	2
Oil & Gas	14.2	14.1	14.1	14.6	15.1	15.0	15.1	15.3	41	(3)	1	42	52	(12)	13	22
Pharmaceuticals	19.3	19.2	19.1	17.7	17.5	18.2	18.8	18.9	(37)	(8)	(15)	(138)	(20)	78	52	11
Real Estate	8.7	8.0	11.4	13.6	11.4	11.4	11.3	10.8	45	(69)	338	222	(221)	(3)	(10)	(44)
Retail	18.7	18.6	19.3	17.2	16.2	17.9	19.8	18.1	(83)	(7)	64	(210)	(92)	171	184	(169)
Telecommunications	19.7	19.7	20.5	18.5	17.7	17.5	17.2	17.1	(233)	(2)	88	(209)	(80)	(20)	(23)	(12)
Textiles	16.6	17.5	19.2	18.6	20.0	24.8	25.6	25.7	(58)	98	169	(64)	145	473	87	6
Transportation	16.2	16.0	17.6	17.9	17.9	12.2	14.3	14.6	(41)	(19)	152	39	(5)	(568)	208	30
Miscellaneous	11.2	12.1	13.1	14.7	12.3	6.4	7.2	6.8	(291)	88	109	159	(245)	(591)	81	(35)
BSE-500 Index	19.1	19.6	19.5	19.4	19.3	18.1	17.7	17.3	39	50	(4)	(10)	(14)	(120)	(45)	(32)
BSE-30 Index	23.5	24.3	24.0	24.0	23.7	23.1	22.6	22.2	37	84	(26)	(8)	(27)	(63)	(46)	(45)
BSE-100 Index	21.2	22.0	21.8	21.5	21.2	19.5	18.8	18.4	36	85	(25)	(28)	(29)	(169)	(67)	(41)
BSE-200 Index	20.0	20.6	20.5	20.3	20.2	18.8	18.2	17.8	35	60	(13)	(18)	(13)	(143)	(55)	(38)
CNX Midcap Index	21.8	22.5	22.0	21.5	21.4	20.7	20.1	19.8	34	65	(51)	(44)	(10)	(72)	(57)	(38)

# MFs & UTI: Holding change - Cos

- ➔ MFs bought **Emco, Britannia, NIIT & Pfizer**
- ➔ Sold **NDTV, Cairn, BASF & Bharat Bijlee**

## Top-25

Company Name	Hldg chg	Holding	Net Inv
	Q-o-Q (%)	(%)	(USDm)
	Jun-08	Jun-08	Jun-08
Emco Ltd.	5.2	31.7	12
Britannia Industries Ltd.	4.2	11.3	32
NIIT Technologies Ltd.	4.2	11.2	8
Pfizer Ltd.	4.0	16.0	17
Balrampur Chini Mills Ltd.	3.9	15.0	21
Sasken Communication Technologies Ltd.	3.7	10.1	4
Arvind Ltd.	3.5	5.7	8
P T C India Ltd.	2.9	12.1	14
Monnet Ispat & Energy Ltd.	2.8	6.6	20
Gujarat Alkalies & Chemicals Ltd.	2.8	11.6	8
Punj Lloyd Ltd.	2.7	15.3	59
Titan Industries Ltd.	2.6	4.9	30
Praj Industries Ltd.	2.6	12.9	19
Sadbhav Engineering Ltd.	2.6	13.2	7
Dr. Reddy'S Laboratories Ltd.	2.2	8.0	56
Bata India Ltd.	2.1	4.0	5
Orbit Corporation Ltd.	2.1	5.1	8
India Infoline Ltd.	2.0	8.8	21
Ballarpur Industries Ltd.	2.0	8.3	8
Lupin Ltd.	2.0	12.0	23
Thermax Ltd.	1.9	15.2	24
Balaji Telefilms Ltd.	1.8	12.8	5
P S L Ltd.	1.6	16.1	5
Vijaya Bank	1.6	12.6	8
Rain Commodities Ltd.	1.6	7.9	6

## Bottom-25

Company Name	Hldg chg	Holding	Net Inv
	Q-o-Q (%)	(%)	(USDm)
	Jun-08	Jun-08	Jun-08
New Delhi Television Ltd.	(18.8)	3.1	(110)
Cairn India Ltd.	(7.0)	1.7	(803)
B A S F India Ltd.	(6.4)	0.1	(10)
Bharat Bijlee Ltd.	(4.9)	6.8	(13)
Mcnally Bharat Engg. Co. Ltd.	(4.8)	15.2	(6)
Simplex Infrastructures Ltd.	(4.2)	11.5	(26)
Spicejet Ltd.	(4.0)	7.7	(8)
Asian Electronics Ltd.	(3.8)	6.3	(4)
Geojit Financial Services Ltd.	(3.6)	0.0	(9)
Carborundum Universal Ltd.	(3.1)	8.6	(8)
Aptech Ltd.	(3.0)	4.3	(7)
Hindustan Oil Exploration Co. Ltd.	(3.0)	2.4	(12)
U T V Software Communications Ltd.	(2.8)	7.5	(15)
Welspun-Gujarat Stahl Rohren Ltd.	(2.7)	12.0	(42)
Mphasis Ltd.	(2.3)	2.9	(25)
Sesa Goa Ltd.	(2.3)	3.5	(75)
B O C India Ltd.	(2.2)	0.0	(7)
Aditya Birla Nuvo Ltd.	(2.1)	6.6	(64)
Grasim Industries Ltd.	(2.1)	6.6	(102)
Finolex Cables Ltd.	(2.0)	5.9	(5)
Mukand Ltd.	(2.0)	3.8	(3)
Ansal Properties & Infrastructure Ltd.	(2.0)	1.7	(7)
Chambal Fertilisers & Chemicals Ltd.	(1.9)	5.0	(13)
Subex Ltd.	(1.9)	11.1	(2)
Bombay Dyeing & Mfg. Co. Ltd.	(1.8)	10.1	(13)

# MFs & UTI: Holding change - Sectors

- ➔ **FMCG, IT & Textiles** witnessed a rise in holding during the quarter whereas **Auto, Diversified, Media & Cement** saw a decline

	Holding (%)								Holding change Q-o-Q (bps)							
	Sep-06	Dec-06	Mar-07	Jun-07	Sep-07	Dec-07	Mar-08	Jun-08	Sep-06	Dec-06	Mar-07	Jun-07	Sep-07	Dec-07	Mar-08	Jun-08
Auto	5.8	6.1	5.9	5.4	5.6	5.4	5.0	4.5	30	22	(12)	(51)	17	(23)	(38)	(52)
Banks & Financial services	3.6	4.4	3.8	4.4	4.2	4.3	4.2	4.0	40	76	(63)	59	(10)	10	(16)	(13)
Cement	8.5	7.7	6.3	5.8	6.3	6.3	6.3	5.6	35	(72)	(143)	(53)	51	4	(3)	(66)
Chemicals & Fertilisers	6.0	5.7	5.8	5.7	5.7	5.8	5.9	6.3	(19)	(36)	11	(8)	(1)	5	17	34
Diversified	10.1	9.3	9.4	8.2	9.5	9.5	9.2	7.6	41	(74)	7	(119)	130	(5)	(26)	(158)
Energy	1.2	1.4	1.5	1.6	2.0	2.0	1.7	1.7	27	16	9	11	44	(7)	(28)	5
Engineering	7.4	7.6	8.4	8.3	8.5	8.6	9.1	9.3	(17)	18	80	(5)	20	9	45	25
FMCG	7.4	7.3	6.8	6.6	6.8	6.6	7.0	7.5	9	(13)	(50)	(21)	20	(21)	42	45
IT - Services	2.9	2.8	2.8	3.0	2.6	2.4	2.3	2.8	(23)	(11)	(3)	19	(40)	(23)	(2)	45
Infrastructure	6.9	7.7	7.5	7.2	6.8	7.0	8.0	8.1	(229)	78	(21)	(25)	(44)	24	99	10
Media	7.8	7.2	8.0	8.0	8.4	8.7	8.6	7.6	(87)	(56)	76	4	41	30	(10)	(100)
Metals / Mining	2.3	2.4	2.4	2.3	2.4	2.6	2.7	2.4	(6)	9	1	(8)	14	17	13	(29)
Oil & Gas	1.7	1.7	1.7	1.8	1.7	2.0	2.5	2.2	22	(2)	1	5	(4)	25	50	(27)
Pharmaceuticals	4.3	4.3	4.6	4.9	4.9	5.1	4.9	4.8	23	2	29	31	(5)	18	(21)	(8)
Real Estate	1.6	1.9	1.2	1.0	0.7	0.6	0.7	0.7	(81)	24	(63)	(29)	(26)	(5)	11	(3)
Retail	6.0	7.3	6.5	6.4	6.3	5.9	7.1	7.3	62	131	(82)	(12)	(3)	(45)	119	24
Telecommunications	2.3	2.4	2.4	2.6	2.5	2.3	2.4	2.7	(21)	1	1	20	(3)	(21)	5	33
Textiles	9.0	8.0	7.3	7.7	7.0	8.1	8.8	9.2	(0)	(103)	(63)	36	(65)	106	68	41
Transportation	4.1	4.0	3.7	3.9	4.6	3.1	3.1	2.8	58	(11)	(36)	17	75	(147)	(1)	(29)
Miscellaneous	3.9	3.8	3.4	3.3	2.8	1.7	1.9	1.7	(102)	(13)	(32)	(19)	(47)	(114)	24	(16)
BSE-500 Index	4.0	4.0	3.8	3.9	3.8	3.7	3.8	3.7	3	4	(19)	5	(4)	(16)	11	(9)
BSE-30 Index	3.7	3.8	3.6	3.7	3.7	3.8	3.9	4.0	(0)	6	(22)	7	0	13	14	9
BSE-100 Index	3.7	3.7	3.5	3.5	3.5	3.4	3.5	3.4	9	5	(23)	4	(5)	(10)	10	(8)
BSE-200 Index	3.7	3.8	3.6	3.6	3.6	3.5	3.6	3.5	4	5	(21)	4	(2)	(12)	11	(8)
CNX Midcap Index	3.7	3.8	3.5	3.6	3.6	3.6	3.8	3.7	6	6	(27)	6	(4)	0	20	(5)

# Banks, FIs & Insurance: Holding change - Cos

- Banks, FIs & Ins cos added **Lupin, Grasim, IDBI Bank, & M&M**
- They sold **Alok Industries, Kansai, Vakrangee & NIIT**

## Top-25

Company Name	Hldg chg	Holding	Net Inv
	Q-o-Q (%)	(%)	(USDm)
	Jun-08	Jun-08	Jun-08
Lupin Ltd.	8.3	8.4	94
Grasim Industries Ltd.	2.6	14.4	128
I D B I Bank Ltd.	2.6	18.9	38
Mahindra & Mahindra Ltd.	2.3	23.6	79
Siemens Ltd.	2.1	14.3	88
Ambuja Cements Ltd.	1.9	15.3	69
A B B Ltd.	1.9	15.8	95
Punjab National Bank	1.6	11.9	57
P T C India Ltd.	1.5	16.1	7
A C C Ltd.	1.5	19.5	45
Asian Paints Ltd.	1.4	10.5	39
Idea Cellular Ltd.	1.4	3.6	88
South Indian Bank Ltd.	1.4	9.3	4
G A I L (India) Ltd.	1.4	18.5	108
Elder Pharmaceuticals Ltd.	1.3	6.5	2
Bayer Cropscience Ltd.	1.3	8.4	3
Maruti Suzuki India Ltd.	1.2	17.8	61
K P I T Cummins Infosystems Ltd.	1.2	9.1	2
Infrastructure Development Finance Co. I	1.2	33.8	51
Hindustan Construction Co. Ltd.	1.1	3.8	8
Unity Infraprojects Ltd.	1.1	5.1	2
Navneet Publications (India) Ltd.	1.1	1.1	2
Indraprastha Gas Ltd.	1.1	8.6	4
Steel Authority Of India Ltd.	1.1	5.9	164
Larsen & Toubro Ltd.	0.9	22.7	166

## Bottom-25

Company Name	Hldg chg	Holding	Net Inv
	Q-o-Q (%)	(%)	(USDm)
	Jun-08	Jun-08	Jun-08
Alok Industries Ltd.	(0.4)	7.0	(1)
Kansai Nerolac Paints Ltd.	(0.5)	4.5	(2)
Vakrangee Softwares Ltd.	(0.5)	0.5	(1)
N I I T Technologies Ltd.	(0.5)	1.8	(1)
Kesoram Industries Ltd.	(0.6)	15.2	(2)
Escorts Ltd.	(0.6)	8.5	(1)
I F C I Ltd.	(0.6)	34.2	(6)
Polaris Software Lab Ltd.	(0.7)	23.6	(2)
Walchandnagar Industries Ltd.	(0.8)	8.3	(2)
Bharati Shipyard Ltd.	(0.8)	2.8	(2)
Gateway Distriparks Ltd.	(0.8)	7.0	(2)
Sujana Towers Ltd.	(0.8)	2.9	(1)
Birla Corporation Ltd.	(0.9)	7.0	(3)
Kalpataru Power Transmission Ltd.	(0.9)	1.7	(6)
Eicher Motors Ltd.	(0.9)	0.6	(2)
Hinduja Ventures Ltd.	(0.9)	0.0	(1)
Gujarat State Petronet Ltd.	(1.2)	15.6	(9)
Ranbaxy Laboratories Ltd.	(1.2)	19.1	(50)
Karuturi Global Ltd.	(1.2)	2.7	(2)
Tata Chemicals Ltd.	(1.3)	16.8	(25)
Wipro Ltd.	(2.0)	0.0	(320)
B O C India Ltd.	(2.3)	0.7	(7)
Ispat Industries Ltd.	(3.6)	16.4	(31)
Pfizer Ltd.	(4.7)	14.8	(20)
Thomas Cook (India) Ltd.	(7.5)	0.2	(26)

# Banks, FIs & Insurance: Holding change - Sectors

➔ **Banks & Fin Services, Cement, FMCG, & Engg** witnessed a rise in holding during the quarter

	Holding (%)								Holding change Q-o-Q (bps)							
	Sep-06	Dec-06	Mar-07	Jun-07	Sep-07	Dec-07	Mar-08	Jun-08	Sep-06	Dec-06	Mar-07	Jun-07	Sep-07	Dec-07	Mar-08	Jun-08
Auto	10.0	10.3	10.8	12.0	12.7	12.7	13.0	13.1	(77)	26	52	114	73	(4)	30	18
Banks & Financial services	6.7	6.6	6.6	6.4	6.1	6.2	6.7	7.2	(40)	(10)	2	(20)	(24)	9	50	44
Cement	9.5	9.0	9.7	10.4	9.3	8.7	8.7	9.9	(79)	(53)	71	71	(110)	(64)	4	120
Chemicals & Fertilisers	7.2	6.5	6.1	6.0	5.9	6.1	5.9	6.0	4	(73)	(38)	(8)	(15)	26	(22)	9
Diversified	10.7	10.9	10.4	10.2	9.8	9.2	9.3	9.0	(103)	19	(54)	(15)	(42)	(58)	12	(33)
Energy	4.4	4.5	4.5	4.5	4.5	4.5	4.4	4.7	18	16	(7)	(2)	1	9	(16)	26
Engineering	7.1	7.2	7.7	8.0	8.3	9.0	9.1	9.6	(11)	1	54	26	30	71	13	51
FMCG	12.3	12.3	12.1	12.0	11.8	11.6	11.9	12.5	24	(5)	(13)	(11)	(25)	(18)	28	63
IT - Services	2.3	2.4	2.4	2.6	2.9	3.1	3.3	3.1	(2)	10	(4)	23	24	23	23	(20)
Infrastructure	1.3	1.0	1.2	1.1	1.1	2.8	2.8	2.8	27	(28)	15	(10)	1	168	2	5
Media	2.4	2.3	1.9	1.7	1.9	1.9	2.1	2.3	(69)	(16)	(42)	(18)	19	0	20	21
Metals / Mining	9.3	9.9	8.8	8.2	7.1	5.7	5.7	5.8	(16)	63	(108)	(65)	(109)	(133)	(3)	12
Oil & Gas	5.1	5.4	5.2	5.4	5.3	5.3	5.4	5.5	4	28	(13)	20	(13)	0	14	9
Pharmaceuticals	6.0	6.2	6.1	6.5	6.8	6.7	6.7	7.0	(8)	16	(8)	38	32	(10)	(5)	38
Real Estate	0.4	0.6	0.4	0.3	0.5	0.6	0.6	0.6	(31)	20	(17)	(6)	19	8	1	(2)
Retail	0.5	0.9	0.9	1.0	0.8	1.2	1.2	1.3	(3)	45	(0)	11	(20)	35	9	4
Telecommunications	4.0	3.6	3.3	3.4	3.8	4.2	4.3	4.6	(90)	(41)	(31)	17	37	34	18	22
Textiles	8.1	7.6	7.1	6.7	5.5	5.3	4.7	4.4	(51)	(54)	(51)	(42)	(117)	(25)	(58)	(32)
Transportation	5.2	4.6	4.2	4.1	3.9	3.4	3.3	3.5	19	(60)	(41)	(13)	(19)	(47)	(9)	16
Miscellaneous	5.9	5.2	4.8	4.5	3.3	1.3	1.5	1.4	(102)	(74)	(40)	(30)	(113)	(201)	20	(13)
BSE-500 Index	6.2	6.1	5.9	5.9	5.7	5.5	5.7	5.9	(30)	(13)	(25)	5	(21)	(19)	16	25
BSE-30 Index	6.6	6.5	6.4	6.5	6.4	6.7	7.2	7.5	(37)	(12)	(6)	8	(10)	28	46	32
BSE-100 Index	6.4	6.3	6.1	6.2	6.0	5.7	6.0	6.3	(36)	(13)	(15)	8	(21)	(27)	28	26
BSE-200 Index	6.4	6.3	6.1	6.2	6.0	5.8	6.0	6.2	(36)	(7)	(23)	8	(19)	(22)	20	24
CNX Midcap Index	6.5	6.4	6.2	6.3	6.2	6.4	6.8	7.2	(37)	(11)	(17)	11	(10)	13	47	35

# BSE 100 holding company-wise

Company	Holding - June2008 (%)				Change in holding Q-o-Q (%)				OW/UW to BSE-500 (%)			OW/UW to BSE-30 (%)		
	Promoter	MFs	Banks, FI & Ins cos	FII	Promoter	MFs	Banks, FI & Ins cos	FII	MFs	Banks, FI & Ins cos	FII	MFs	Banks, FI & Ins cos	FII
<b>Auto</b>														
Ashok Leyland Ltd	38.6	3.0	15.1	11.9		0.6	(0.0)	0.1	(0.0)	0.1	(0.0)			
Bajaj Auto Ltd	50.3	2.4	6.0	12.6										
Bharat Forge Ltd	40.6	3.8	10.3	14.2		(0.4)	(0.0)	(0.2)	(0.1)	0.0	(0.1)			
Hero Honda Motors Ltd	55.0	3.8	8.2	24.3		(0.1)	0.6	(0.4)	(0.1)	0.0	0.1			
Mahindra & Mahindra Ltd	22.6	4.5	23.6	24.7	0.0	(0.7)	2.3	(0.8)	(0.2)	0.6	(0.0)	(0.7)	0.2	(0.5)
Maruti Suzuki India Ltd	54.2	6.2	17.8	14.8		(0.3)	1.2	(0.9)	0.2	0.8	(0.1)	(0.2)	0.4	(0.5)
Tata Motors Ltd	33.4	2.0	15.6	15.2	(0.0)	(0.7)	0.8	(1.7)	(0.3)	0.6	(0.1)	(0.8)	0.2	(0.6)
<b>Banks &amp; Financial services</b>														
Axis Bank Ltd	42.4	8.1	1.1	31.2	(0.1)	0.5	0.4	(2.7)	0.5	(0.6)	0.5			
Bajaj Finserv Ltd	50.3	0.3	6.2	14.8										
Bank of Baroda	53.8	11.0	6.7	19.6		(0.5)	0.1	(0.2)	0.4	0.0	0.1			
Bank of India	64.5	1.8	9.2	16.3	(0.0)	(0.9)	0.1	1.2	(0.1)	0.2	0.1			
HDFC Bank Ltd	19.4	2.4	4.8	28.0	(3.8)	(0.3)	0.0	2.1	(1.1)	(1.0)	0.2	(2.6)	(2.4)	(1.3)
Housing Development Finance Corp		4.3	6.3	59.1		0.7	0.8	(1.5)	(1.1)	(1.3)	3.1	(3.4)	(3.5)	0.8
ICICI Bank Ltd		6.0	11.5	38.8		(0.1)	0.5	(1.5)	(1.0)	(0.5)	1.0	(4.3)	(3.8)	(2.4)
IDBI Bank Ltd	52.7	2.3	18.9	2.9	(0.0)	(1.0)	2.6	(1.6)	(0.1)	0.3	(0.1)			
Indiabulls Financial Services Ltd	29.7	0.6	0.0	31.8		(0.1)	0.0	(2.4)	(0.2)	(0.3)	0.2			
Infrastructure Development Finance		8.9	33.8	35.2		0.3	1.2	(2.7)	0.3	1.6	0.4			
Kotak Mahindra Bank Ltd	52.5	3.9	0.7	24.9	(0.1)	(0.2)	0.1	(0.5)	0.0	(0.4)	0.4			
Power Finance Corp Ltd	89.8	1.6	0.7	4.1		0.5	0.1	(1.4)	0.0	(0.1)	(0.0)			
Punjab National Bank Ltd	57.8	4.8	11.9	19.8		(1.5)	1.6	(0.2)	0.1	0.3	0.1			
Reliance Capital Ltd	53.4	1.5	2.5	23.2	0.0	0.5	0.4	(3.2)	(0.4)	(0.4)	0.4			
State Bank of India Ltd	59.4	3.7	7.8	12.7	(0.3)	(0.7)	0.6	(0.2)	0.1	0.7	(0.1)	(1.4)	(0.8)	(1.6)
Union Bank Of India	55.4	8.6	2.8	18.7		(0.6)	0.0	(0.8)	0.2	(0.1)	0.0			
<b>Cement</b>														
ACC Ltd	43.0	3.1	19.5	9.1	(0.0)	0.0	1.5	(6.0)	(0.1)	0.5	(0.2)	(0.4)	0.2	(0.5)
Ambuja Cements Ltd	46.5	0.5	15.3	21.2	(0.0)	0.2	1.9	(1.8)	(0.3)	0.4	0.1			
Century Textile & Industries Ltd	40.1	10.9	5.7	7.2	(0.0)	(0.6)	0.2	(1.6)	0.2	(0.0)	(0.1)			
Grasim Industries Ltd	25.2	6.6	14.4	21.2		(2.1)	2.6	(1.1)	0.0	0.3	(0.1)	(0.6)	(0.3)	(0.7)
India Cements Ltd	28.1	8.7	9.1	28.5	(0.0)	0.9	(0.0)	(3.0)	0.1	(0.0)	0.0			
Jaiprakash Associates Ltd	44.5	8.5	3.0	24.4	(0.1)	(0.7)	0.5	(1.1)	0.7	(0.3)	0.3	0.2	(0.8)	(0.1)
<b>Chemicals &amp; Fertilisers</b>														
Tata Chemicals Ltd	29.1	13.3	16.8	11.2	(0.1)	1.0	(1.3)	0.8	0.3	0.2	(0.2)			
United Phosphorus Ltd	28.0	14.5	1.0	41.6		0.5	(0.0)	(1.5)	0.3	(0.2)	0.1			

## BSE 100 .....

## Contd.

Company	Holding - June 2008 (%)				Change in holding Q-o-Q (%)				OW/UW to BSE-500 (%)			OW/UW to BSE-30 (%)		
	Promoter	Banks, FI & Ins MFs	cos	FII	Promoter	Banks, FI & Ins MFs	cos	FII	MFs	Banks, FI & Ins cos	FII	MFs	Banks, FI & Ins cos	FII
<b>Diversified</b>														
Aditya Birla Nuvo Ltd	40.2	6.6	10.6	20.4	0.0	(2.1)	0.0	2.5	0.1	0.1	(0.0)			
<b>Energy</b>														
NTPC Ltd	89.5	0.8	1.8	4.1		0.0	0.6	(1.0)	(0.5)	(0.2)	(0.2)	(1.4)	(1.1)	(1.1)
Power Grid Corp of India Ltd	86.4	0.6	1.9	2.7		(0.0)	0.5	(0.2)	(0.2)	(0.0)	(0.1)			
Reliance Infrastructure Ltd	36.7	5.2	18.6	16.9	0.7	0.1	0.4	(1.7)	0.1	1.1	(0.0)	(0.5)	0.5	(0.6)
Reliance Natural Resources Ltd	54.8	0.1	4.0	3.1	0.0	0.0	(0.0)	(0.7)	(0.3)	(0.1)	(0.2)			
Reliance Power Ltd	84.8	0.1	1.0	4.7	(5.1)	(0.1)	0.3	1.0	(0.3)	(0.1)	0.1			
Tata Power Co Ltd	33.4	7.3	19.1	20.8	(0.0)	0.6	(0.2)	0.2	0.2	0.9	(0.1)	(0.6)	0.1	(0.9)
<b>Engineering</b>														
ABB Ltd/India	52.1	3.5	15.8	14.4		(0.4)	1.9	(1.4)	(0.1)	0.7	(0.0)			
Bharat Heavy Electricals Ltd	67.7	6.7	3.4	16.0	(0.0)	1.1	0.3	(2.1)	1.6	(0.4)	0.5	0.5	(1.6)	(0.7)
Crompton Greaves Ltd	39.4	21.0	3.8	13.8	0.2	0.1	0.4	(2.0)	0.7	(0.2)	(0.1)			
Larsen & Toubro Ltd		15.9	22.7	14.2		0.1	0.9	(2.4)	3.7	2.9	(1.7)	0.9	0.1	(4.5)
Siemens India Ltd	55.2	5.9	14.3	4.1		(0.2)	2.1	(1.8)	0.3	0.6	(0.2)			
Suzlon Energy Ltd	65.9	2.9	0.7	21.7	(0.0)	(0.3)	0.2	0.4	(0.0)	(0.6)	0.6			
<b>FMCG</b>														
Asian Paints Ltd	49.5	1.5	10.5	15.1	0.0	(0.5)	1.4	0.1	(0.3)	0.1	(0.1)			
Hindustan Unilever LTD	52.1	3.7	12.2	14.4	(0.0)	0.7	(0.1)	(0.8)	(0.3)	0.8	(0.3)	(1.4)	(0.3)	(1.3)
ITC Ltd		14.9	23.4	13.4		0.0	0.6	(0.6)	3.5	3.4	(1.4)	1.2	1.0	(3.8)
Nestle India Ltd	61.8	5.7	5.9	8.0		0.2	0.1	(0.2)	0.1	(0.0)	(0.2)			
Tata Tea Ltd	35.3	9.2	16.7	14.5		(0.6)	(0.3)	1.6	0.1	0.1	(0.1)			
United Spirits Ltd	36.6	2.0	0.0	33.8		0.1	0.0	(0.4)	(0.2)	(0.4)	0.4			
<b>Infrastructure</b>														
GMR Infrastructure Ltd	73.3	0.9	6.6	9.0		0.1	0.1	(1.3)	(0.1)	0.3	0.1			
IVRCL Infrastructures & Projects Ltr	9.6	17.4	0.2	56.8		(0.6)	(0.1)	(0.2)	0.3	(0.2)	0.2			
Punj Lloyd Ltd	44.5	15.3	1.0	17.6	(0.2)	2.7	0.1	(3.6)	0.6	(0.2)	0.0			
<b>IT - Services</b>														
Educomp Solutions Ltd	55.0	2.7	0.0	33.0	(1.0)	0.1	0.0	1.1	(0.0)	(0.1)	0.2			
Financial Technologies India Ltd	45.6	1.1	0.1	33.4	(0.0)	(0.1)	(0.1)	1.0	(0.2)	(0.2)	0.1			
HCL Technologies Ltd	67.5	2.1	2.8	17.7	0.1	(0.4)	(0.0)	0.8	(0.1)	(0.2)	0.1			
Infosys Technologies Ltd	16.5	3.9	4.0	33.6	(0.0)	1.0	(0.2)	0.2	(2.8)	(3.6)	(0.2)	(6.8)	(7.6)	(4.2)
Satyam Computer Services Ltd	8.6	5.6	8.8	47.7	(0.1)	0.7	0.7	(0.6)	(0.7)	(0.7)	0.5	(2.0)	(2.0)	(0.8)
Tata Consultancy Services Ltd	76.4	2.1	4.3	11.2	(1.2)	0.8	0.2	0.4	(0.2)	0.1	0.2	(1.2)	(0.9)	(0.8)
Wipro Ltd	79.4	0.4	0.0	7.5	(0.0)	0.1	(2.0)	2.3	(0.6)	(0.7)	(0.0)	(1.2)	(1.4)	(0.6)
<b>Media</b>														
Zee Entertainment Enterprises Ltd	41.5	12.6	8.4	26.0	(0.0)	(0.9)	0.8	(1.4)	0.4	(0.0)	0.1			

## BSE 100 .....

## Contd.

Company	Holding - June2008 (%)				Change in holding Q-o-Q (%)				OW/UW to BSE-500 (%)			OW/UW to BSE-30 (%)		
	Promoter	Banks, FI & Ins cos	MFs	FII	Promoter	Banks, FI & Ins cos	MFs	FII	MFs	Banks, FI & Ins cos	FII	MFs	Banks, FI & Ins cos	FII
<b>Metals / Mining</b>														
Hindalco Industries Ltd	31.4	4.4	11.4	12.3	(0.0)	0.8	0.0	(0.8)	(0.2)	0.1	(0.3)	(0.8)	(0.5)	(0.9)
Jindal Steel & Power Ltd	58.6	4.9	0.0	22.7	(0.3)	0.0	0.0	(0.1)	0.2	(0.7)	0.3			
JSW Steel Ltd	47.0	0.2	5.2	29.3	(0.0)	(1.8)	(0.1)	2.9	(0.5)	(0.2)	0.2			
National Aluminium Co Ltd	87.1	0.2	5.1	4.0		(0.0)	0.0	(0.1)	(0.2)	0.3	(0.0)			
NMDC Ltd	98.4	0.1	1.2	0.0				0.0	(0.2)	0.4	(0.3)			
Sesa GOA Ltd	51.2	3.5	3.6	23.2		(2.3)	(0.1)	1.7	(0.1)	(0.2)	0.1			
Steel Authority Of India Ltd	85.8	1.4	5.9	4.0		0.0	1.1	(1.4)	0.0	0.9	(0.1)			
Sterlite Industries India Ltd	62.5	2.7	3.0	7.6		(0.7)	(0.0)	0.1	(0.3)	(0.6)	(0.5)	(1.3)	(1.5)	(1.5)
Tata Steel Ltd	33.9	5.0	17.1	19.8		(0.1)	0.3	0.3	(0.6)	1.2	(0.5)	(2.4)	(0.6)	(2.3)
Welspun-Gujarat Stahl Ltd	44.5	12.0	1.0	17.5	2.6	(2.7)	(0.3)	0.7	0.2	(0.2)	(0.0)			
<b>Oil &amp; Gas</b>														
Aban Offshore Ltd	60.9	4.8	0.1	16.3	(0.0)	0.2	0.0	(0.3)	0.1	(0.2)	0.1			
Bharat Petroleum Corp Ltd	64.3	3.7	15.7	10.6		(0.7)	0.0	0.5	0.1	0.5	(0.0)			
Cairn India Ltd	64.8	1.7	3.5	10.5	(4.2)	(7.0)	0.4	7.0	(0.3)	(0.2)	(0.0)			
Essar Oil Ltd	18.6	0.0	0.0	6.4		(0.0)	(0.2)	0.8	(1.0)	(1.0)	(0.8)			
GAIL India Ltd	57.3	3.2	18.5	14.5		(0.7)	1.4	(0.4)	(0.0)	1.5	0.0			
Hindustan Petroleum Corp Ltd	51.1	5.6	19.1	13.1		(0.0)	0.1	(0.1)	0.1	0.3	(0.0)			
Indian Oil Corp Ltd	80.4	1.2	3.4	1.7		(0.0)	(0.0)	0.1	0.1	0.3	(0.1)			
Oil & Natural Gas Corp Ltd	74.1	1.6	4.0	6.9		0.0	0.2	(0.7)	(0.2)	0.7	(0.1)	(1.9)	(0.9)	(1.7)
Reliance Industries Ltd	51.4	2.8	6.3	17.1		0.1	0.1	(0.7)	(3.4)	(1.3)	(0.3)	(10.7)	(8.7)	(7.6)
Reliance Petroleum Ltd	75.4	1.2	3.8	1.5		0.5	(0.2)	(0.3)	(0.6)	(0.1)	(0.9)			
<b>Pharmaceuticals</b>														
Cipla Ltd/India	39.4	1.8	12.0	17.7			0.5	0.3	(0.6)	(0.5)	0.1	(0.2)		
Divi's Laboratories Ltd	53.5	14.4	0.1	15.5	(0.1)	0.5	0.0	(0.1)	0.5	(0.2)	(0.1)			
Dr Reddys Laboratories Ltd	25.1	8.0	12.9	23.8	(0.0)	2.2	(0.1)	(1.0)	(0.0)	(0.0)	(0.1)			
Glenmark Pharmaceuticals Ltd	52.1	2.5	1.5	28.9	(0.3)	0.1	(0.0)	0.9	(0.3)	(0.4)	0.2			
Ranbaxy Laboratories Ltd	34.8	3.6	19.1	17.1	(0.0)	0.5	(1.2)	(0.9)	(0.4)	0.4	(0.3)	(1.1)	(0.2)	(1.0)
Sun Pharmaceutical Industries Ltd	63.7	3.6	1.3	20.2	0.0	0.1	(0.2)	1.1	(0.1)	(0.5)	0.1			
<b>Real Estate</b>														
DLF Ltd	88.2	0.4	0.2	6.5		(0.0)	(0.0)	(1.0)	(0.4)	(0.5)	0.3	(0.9)	(1.0)	(0.2)
Housing Development & Infrastruct	61.5	0.9	0.1	9.3		(0.3)	(0.0)	(1.9)	(0.0)	(0.1)	0.1			
Indiabulls Real Estate Ltd	26.1	0.5	0.0	41.7	(1.8)	(0.7)	(0.0)	(4.9)	(0.3)	(0.3)	0.4			
Unitech Ltd	74.6	0.5	1.5	5.4		0.0	0.0	(1.2)	(0.4)	(0.3)	(0.2)			

Company	Holding - June2008 (%)				Change in holding Q-o-Q (%)				OW/UW to BSE-500 (%)			OW/UW to BSE-30 (%)		
	Promoter	MFs	Banks, FI & Ins cos	FII	Promoter	MFs	Banks, FI & Ins cos	FII	MFs	Banks, FI & Ins cos	FII	MFs	Banks, FI & Ins cos	FII
<b>Telecommunications</b>														
Bharti Airtel Ltd	66.5	2.9	2.8	23.6	0.6	0.8	0.4	(1.4)	(0.3)	(1.3)	2.4	(2.6)	(3.6)	0.1
Idea Cellular Ltd	57.7	1.7	3.6	11.3		1.4	1.4	3.6	(0.2)	(0.1)	0.0			
Mahanagar Telephone Nigam	56.2	4.4	19.4	3.4		1.0	0.0	(3.2)	0.0	0.3	(0.1)			
Reliance Communications Ltd	66.1	2.8	6.1	10.0		(0.3)	0.2	0.0	(0.1)	0.4	(0.3)	(1.7)	(1.1)	(1.8)
Tata Communications Ltd	76.2	1.0	11.5	1.8		(1.3)	0.9	0.1	(0.1)	0.4	(0.1)			
<b>Transportation</b>														
Mundra Port and Special Economic Z	81.3	0.4	1.9	5.1		(0.7)	(0.1)	1.1	(0.1)	0.0	0.0			
<b>Miscellaneous</b>														
Adani Enterprises Ltd	75.0	1.4	0.0	14.1	(0.0)	(0.2)	(0.0)	0.2	(0.1)	(0.2)	0.2			
Indian Hotels Co Ltd	29.5	6.2	19.1	18.7	0.4	(0.1)	0.9	(0.6)	0.0	0.3	(0.0)			
Mmtc Of India Ltd	99.3	0.6				(0.0)			0.1					

---

# Thank You

---

This document is provided for assistance only and is not intended to be and must not alone be taken as the basis for an investment decision. Nothing in this document should be construed as investment or financial advice, and nothing in this document should be construed as an advice to buy or sell or solicitation to buy or sell the securities of companies referred to in this document. The intent of this document is not in recommendatory nature

Each recipient of this document should make such investigations as it deems necessary to arrive at an independent evaluation of an investment in the securities of companies referred to in this document (including the merits and risks involved), and should consult its own advisors to determine the merits and risks of such an investment. The investment discussed or views expressed may not be suitable for all investors

Enam Securities Private Limited has not independently verified all the information given in this document. Accordingly, no representation or warranty, express or implied, is made as to the accuracy, completeness or fairness of the information and opinions contained in this document

The Disclosures of Interest Statement incorporated in this document is provided solely to enhance the transparency and should not be treated as endorsement of the views expressed in the report. This information is subject to change without any prior notice. The Company reserves the right to make modifications and alternations to this statement as may be required from time to time without any prior approval

Enam securities Private Limited, its affiliates, their directors and the employees may from time to time, effect or have effected an own account transaction in, or deal as principal or agent in or for the securities mentioned in this document. They may perform or seek to perform investment banking or other services for, or solicit investment banking or other business from, any company referred to in this report. Each of these entities functions as a separate, distinct and independent of each other. The recipient should take this into account before interpreting the document

This report has been prepared on the basis of information, which is already available in publicly accessible media or developed through analysis of ENAM Securities Private Limited. The views expressed are those of analyst and the Company may or may not subscribe to all the views expressed therein

This document is being supplied to you solely for your information and may not be reproduced, redistributed or passed on, directly or indirectly, to any other person or published, copied, in whole or in part, for any purpose. Neither this document nor any copy of it may be taken or transmitted into the United State (to U.S. Persons), Canada, or Japan or distributed, directly or indirectly, in the United States or Canada or distributed or redistributed in Japan or to any resident thereof. The distribution of this document in other jurisdictions may be restricted by law, and persons into whose possession this document comes should inform themselves about, and observe, any such restrictions

Neither the Firm, not its directors, employees, agents or representatives shall be liable for any damages whether direct or indirect, incidental, special or consequential including lost revenue or lost profits that may arise from or in connection with the use of the information.

**Copyright in this document vests exclusively with ENAM Securities Private Limited.**